

# TERM 1, 2014



## Welcome back!

Welcome everyone! A very big welcome in particular to the new families and children to Haddon Primary School. We hope that you all had a restful break over Christmas and the New Year. This newsletter is designed to keep you up to date with up-coming events and to provide you with general information.

## Term Dates

- Term 1:** 28th January to 4th April  
**Term 2:** 22nd April to 27th June  
**Term 3:** 14th July to 19th September  
**Term 4:** 6th October to 19th December

## Important dates:

### Term 1

#### February

- 13th - Helping your child with reading information session  
25th - School Photos

#### March

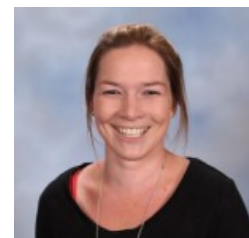
- 4th - School House Athletics  
10th - Labor Day Public Holiday (no school)  
12th - Prep Students attend (Some prep interviews still scheduled)

### Term 2

Swimming (P-2) - More information will be provided later this term.



Mrs Louise Kirk - Yellow door  
Grade Prep/One Teacher



Miss Lauren Pitson - Red door  
Grade Prep/One Teacher



Mr Bradley Karslake—Blue door  
Grade One/Two teacher



Mrs Samantha Benn—Green door  
Grade Two Teacher

## Parent Teacher Interviews

Thankyou to all of those parents who were able to attend their child's assessment interview last week. If you were unable to attend please see your child's classroom teacher to arrange another time.

## Parent Helpers

We highly value and appreciate our parent/guardians contributions and commitment to our school and the children. This year we are really hoping to get our parents back involved by initially listening to students read.

The two prep/one classes are seeking parents to read with and to small groups of children each morning for approximately 20 minutes after classroom teachers have marked the roll. As this will take place inside the classroom where the classroom teacher is present a working with children's check is not required.

1/2K and 2B are also looking for parents to listen to students read independently on the following mornings.

1/2K: Tuesday and Thursday

2B: Tuesday, Wednesday and Thursday

## Reminders & General Information

### Clothing

Please send your child to school with a spare pair of underwear and pants in their school bag in case an 'accident' takes place.



### Personal belongings

Please take the time to check that your child's clothing is named in a spot that is clearly visible. Often names in text fade over time and through washing so it's important to rename these items regularly. It has been wonderful to see so many children bringing small containers to house their food in. Can we please ask you to make sure these are named. Often we end up with quite a collection in the blue lost property container because the children can't remember what container they had with them. If your child does lose anything please check the lost property bin first, before asking the teacher, which is located near the centre bench of the Early Learning Centre.

### Healthy Snack

Having a quick, healthy snack is an important part of our daily routine and plays an important part in establishing healthy eating patterns throughout life. Students are permitted to have a small healthy snack during class time. This is usually around 12.30pm however if a specialist class is scheduled this may alter slightly.

Examples of healthy snacks..

- Yoghurt
- Small piece of fruit
- Piece of cheese
- Dried fruit
- Fruit in jelly
- Celery & carrot sticks

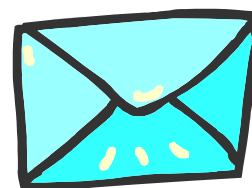


### Notes

Please make sure that you check your child's school bag regularly for notices about class or school events. School newsletters go home every Friday with the eldest in the family.

### Invitations

If your child is having a birthday party and wishes to hand out invitations we ask that you hand these to the teacher at the start of the school day. The classroom teacher will then discretely put these into children's take home reader bags. Birthday party's can be expensive and we understand it is not always possible to invite everyone you want to. We hope this act will help to avoid the look and feelings of disappointment as to "Why wasn't I invited?"



### Take home readers

This week your child has begun taking home two books from their allocated tub in the classroom. Please note the books they take home are meant to be on the easier side to allow for the development of fluency and comprehension.

The texts in which your child works on in the classroom are harder as your child has the teacher's support in choosing appropriate strategies to decipher unknown words.

Each night when your child reads please fill out the reader diary with the name of the book as well as any comments you wish to make. Also, please make sure you take the time to look through the diary as there are many additional resources included.

### Investigations

Please remind your children (including younger siblings) not to touch items in the investigation areas throughout the Early Learning Centre. Your children and their teachers have set up areas for meaningful learning experiences and don't wish to have these altered prior to the commencement of Investigations of a morning.

If you have anything you wish to donate for our Investigations please see your child's classroom teacher as we are getting to the point where we can no longer house all the equipment.

## Reminders & General Information

### Rules for inside the Early Learning Centre

Although some of these rules may seem obvious our intention is to publicise them so everyone can obtain a common understanding of expectations. By taking careful consideration of these rules we can maintain not only a safe environment but also look after our new Early Learning Centre together. The rules include:

- No running;
- No ball games;
- Shoes on and wiped thoroughly before entering;
- Clean hands (we encourage everyone to wash their hands to help prevent allergic reactions - especially after eating);
- No animals (unless approved by classroom teacher); and
- School bags and personal belongings to be kept neatly in designated area until bag storage arrives to prevent injuries).

### Allergies

As the Early Learning centre is a shared area we ask that you are mindful of our students who have **SEVERE ALLEGIES** when packing your child's lunch.

The following is a list of foods to avoid:

- Nuts and products containing traces of nuts for example: Nutella
- Oranges and products containing oranges
- Blueberries and products containing blueberries
- Mangoes
- Cheezles, Twisties, Corn Chips, Shapes and Barbecue and Chicken Chips.

Please take the time to read through these things. Thank you for making our Early Learning Centre a HAPPY and HEALTHY place.

### Punctuality

Please be aware that children are not allowed to enter the Early Learning Centre until 8:50am. If your child needs to be at school before this time, bags should be placed outside the door (not in the door way) and children **must** move to the quiet area. This is a whole school rule for all children, as teachers are unable to supervise children before this time. Also please remember that school commences at 9:00am each morning. Children who arrive after the 9 o'clock bell **must** obtain a late pass from the office. If your child is absent from school, a signed note is required when they return to school to explain their absence or please see Lisa at the office.

**LATE PASS**

### Sun smart Policy

During Term 1 and Term 4 every child is required to wear a broad brimmed school hat when outside. Children will need to wear a hat every day during this term for all play times and sports sessions. Please ensure that your child's name is written clearly inside his/her hat. If your child has no hat they must sit in the shade of our quiet area. There is always sunscreen available for children to use. School hats are available for purchase from the school office.



### Staff areas

Please note that the resource room (large room at the end of the building) and the teacher office (in between the green and blue classrooms) are for **TEACHERS ONLY**. Under no circumstances should anyone enter these rooms other than the teachers.

Please note the toilets in the building are for staff only. Students are to continue to use the toilets located around the main building. This includes younger siblings.

## Reminders & General Information

### School Routine

During the first few months of school we encourage all students to settle into a familiar school routine and begin to gain independence. Children can gain confidence and take responsibility for their belongings by completing simple tasks such as carrying their own school bags, walking themselves to the classroom, packing and unpacking their school bags and getting organised for the day by unpacking their reader bags, drink bottles etc.

Teachers aim to have their current learning intentions on display outside the classroom each fortnight. Please take the time to read these as it will give you an insight into what your child is focusing on at school. Often children aren't forthcoming about what they have been doing at school.

### Structure of the school day

9am-11am- Class time  
 11am-11:30am- Recess  
 11:30am-1:30pm- Class Time  
 1:30pm-2:30pm- Lunch Time  
 2:30pm-3:25pm- Class Time  
 3:25pm- School dismissed

### PE and ART

Students require a named art smock or an old shirt to protect their clothing during art classes. These will be kept together in the classroom. Students are to wear runners or suitable footwear during P.E classes. From time to time there are time table changes however below outlines when each Early Learning Centre class has their specialist classes.

Specialist Class	Prep/One K	Prep/One P	One/Two K	Two B
Art	Thursday	Tuesday	Tuesday	Thursday
P.E	Tuesday and Friday	Thursday & Friday	Tuesday & Wednesday	Tuesday & Wednesday
LOTE--Japanese	Tuesday	Tuesday	Thursday	Thursday

### ICT

We are lucky enough to have interactive whiteboards in all classrooms and the children have the opportunity to participate in many different online, interactive activities. This year we are lucky enough to have not only 6 Netbooks for use in each classroom but also 6 I-pads as a result of the fundraising efforts of a dedicated groups of parents throughout 2013.

### Library

Please encourage your child to take advantage of the library being open each morning. The library is open for borrowing from 8:45am. Borrowing from the library will commence in a few week as the borrowing system is currently being updated. Students are encouraged to read and be exposed to a range of different texts. Having a library book to take home to read to or with a parent, grandparent or sibling is a great way to expand the types of texts your child is familiar with.

### Collecting your child at the end of the school day

Please be aware that when picking up your children, you need to remain *outside* the Early Learning Centre until the 3:25pm bell has gone. It can be a distraction for the children when parents are waiting outside the classroom doorways and makes classroom organisation and dismissal difficult.

For the safety of the children please remember that parents/guardians are required to come to the gate to collect their children. We are unable to let children out of the side gate (behind the ELC) without a parent. This is essential for the safety of all children. Also, just a reminder that students are not to play on the senior playground before or after school unless supervised by their parent/guardian.

### Air Conditioners

The newly installed air conditioners have been a big hit with both teachers and students. A huge thank you must go out to all of those involved in raising the money to purchase the units and materials and those involved in the installation.



Helping Your Child with Reading and  
Writing  
Listening to Children Read

An Information session will be held on Thursday February 13 , from 9:00-9:40 for parents who would like more information on helping their child with reading and writing.

This session will be of benefit to any parent P-2 who would like to assist their child in reading and writing or who have questions relating to these programs at Haddon Primary.

We will meet in the library and then move into a classroom to use the data projector.

Please register your name at the office if you are interested.

Thank you  
Gaye Carrigan